



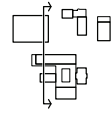
Planung
Sollberger Bögli Architekten
Dipl. Architekten ETH SIA BSA
Mattenstrasse 108, CH-2503 Biel

Bauherrschaft
Kanton Appenzell Ausserrhoden
Amt für Immobilien Hochbauten und Unterhalt
Obstmarkt 1, CH-9102 Herisau

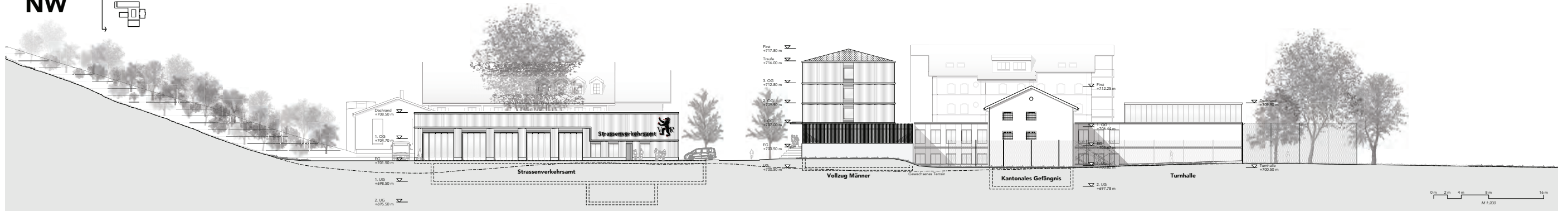
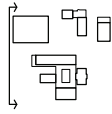
Projekt
Neu- und Umbau Gefängnisse Gmünd
Gmünd
CH-9052 Niederteufen AR

Wettbewerb überarbeitet
Situation
Massstab 1/2000
30.04.2024 / JvB
Seite 1/1

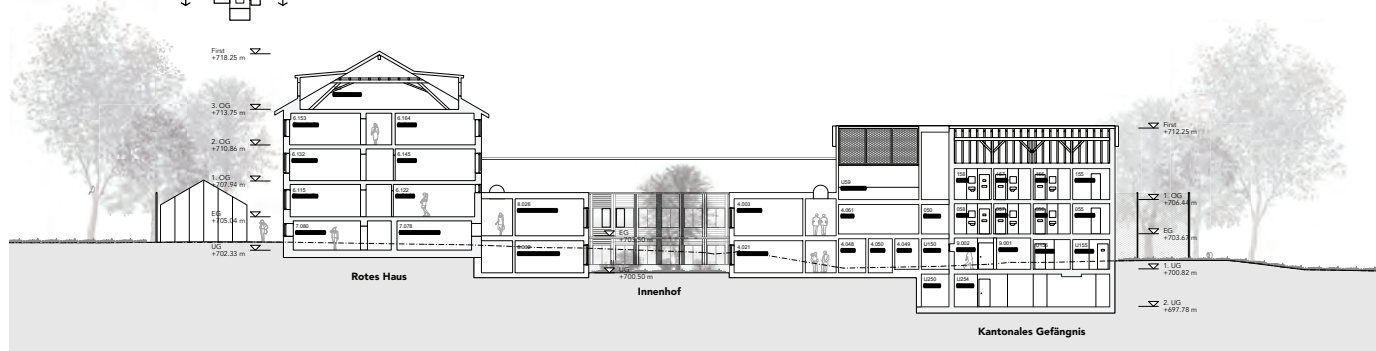
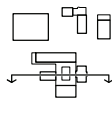
Schnitt A-A
M 1:200
A-A



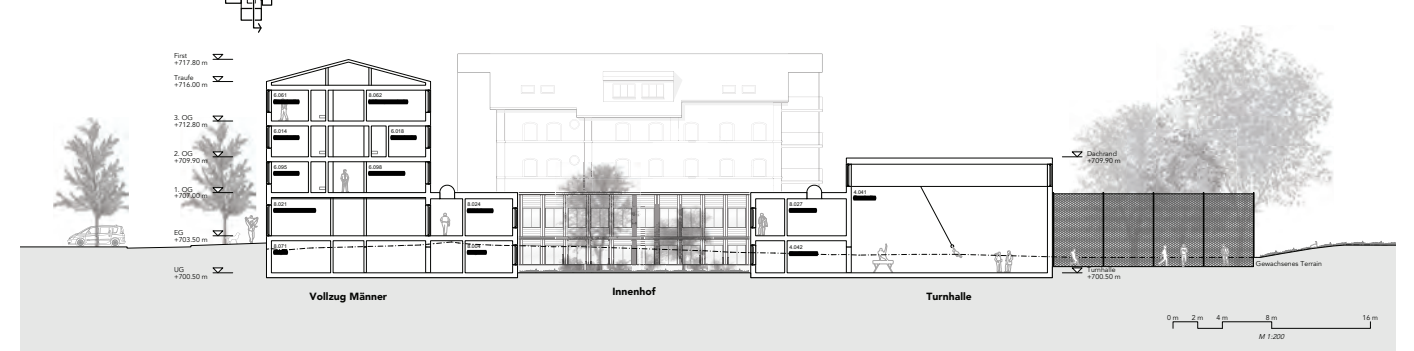
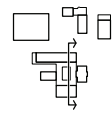
Fassade Nordwest
M 1:200
NW



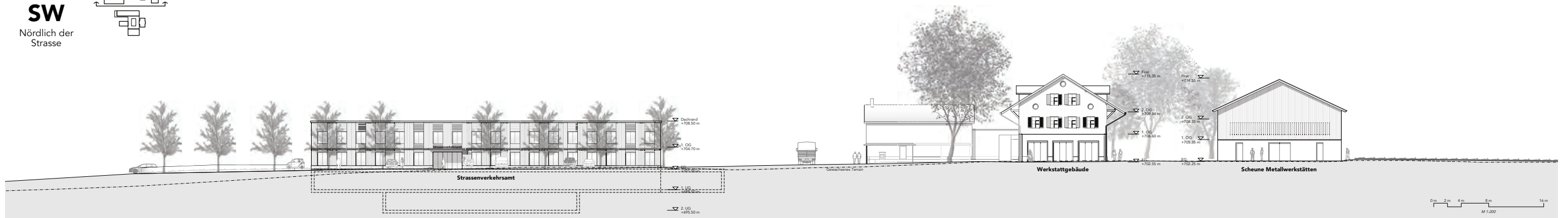
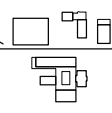
Schnitt C-C
M 1:200
C-C



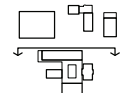
Schnitt B-B
M 1:200
B-B



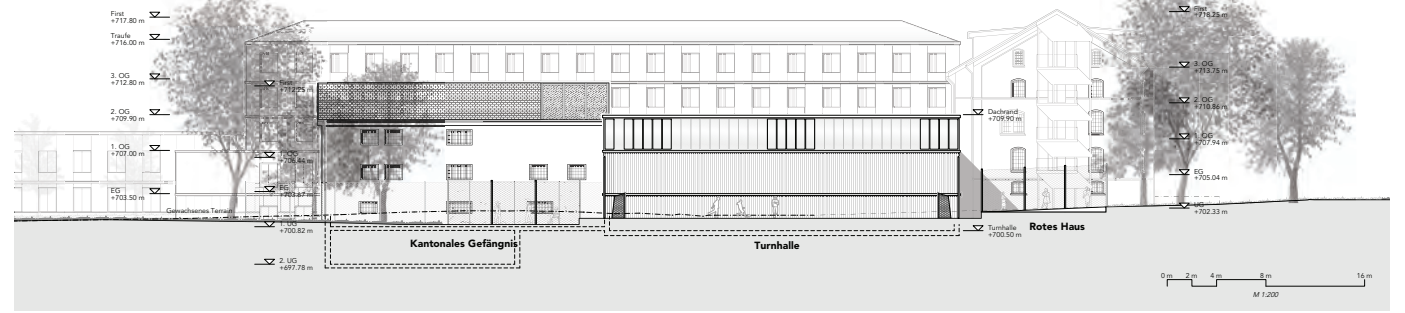
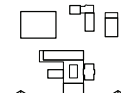
Fassade Südwest
M 1:200
SW
Nördlich der
Strasse



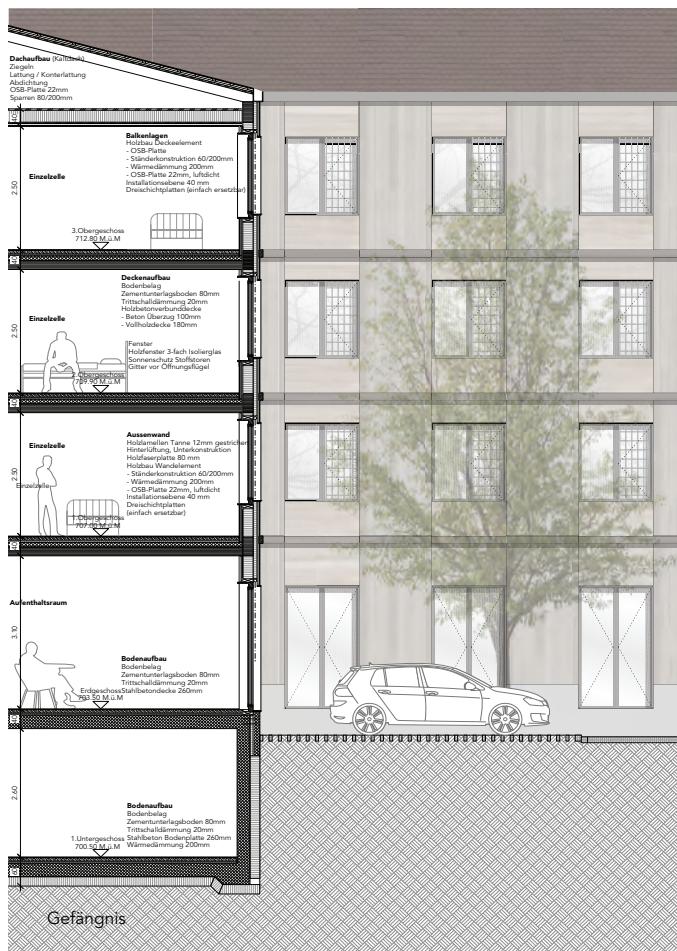
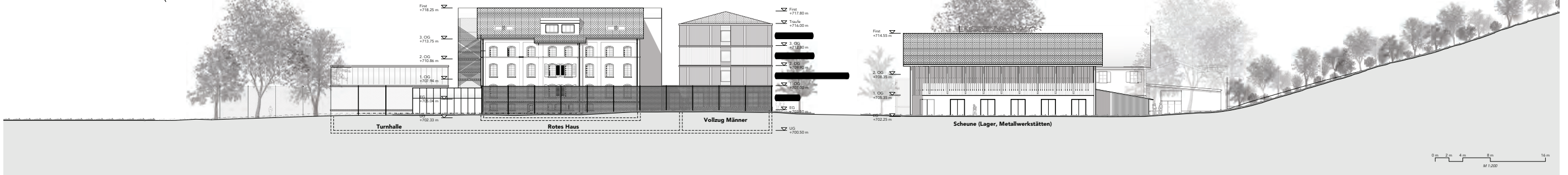
Fassade Nordost
M 1:200
NO



Fassade Südwest
M 1:200
SW



Fassade Südost
M 1:200
SO



Konstruktion und
Fassadenteilsichten
M 1:50

